



The Prospector's Quill

VOLUME XLIII, ISSUE XII

DECEMBER 2018

Tiny Nuggets

Gold is the only metal that is yellow or golden. Other metals may develop a yellowish color, but only after they have oxidized or reacted with other chemicals.

Most retail sellers of gold, sell nuggets for ten times the spot price and purchase those same nuggets for 1/2 of spot.

The world's largest gold bar weighs 250 kg (551 lbs.)

Our bodies contain about 0.2 milligrams of gold, most of it in our blood.

More gold is recoverable from a ton of personal computers than from 17 tons of gold ore.

Gold Price USA
Nov. 22, 2018
\$1226.90



Toys For Tots

Each year at the GPOC annual Christmas party we request that members bring an unwrapped gift for the Marines Toys for Tots program.

What ages are served.

Most campaigns work hard to assist children up to age 12, but in many communities the support may be extended up to 14-16 years of age.

Preteen and teens are groups for which shopping is especially difficult. Do you have any ideas?

The Foundation does purchase supplemental toys/gifts for our campaign sites and focuses on these age groups. In the past, items purchased for these groups have included, but are not limited to: sporting equipment/bags/balls; books, backpacks, cosmetics, purses, watch/wallet gift sets, bath gift sets, board games, radio control cars/trucks, hand-held electronics, skateboards/helmets, curling irons, hair straighteners, and hair dryers. This is a group that is often left out.

Are there toys/gifts that are not accepted/distributed?

Toys for Tots prefers not to accept realistic looking weapons and gifts with food. If donated, such items will NOT be distributed.

Is there a list of toys available to guide me with my donation?

Toys for Tots does not publish a list of appropriate toys to donate. If such a list were created, most would follow it, resulting in a limited selection of items to distribute in each community. We would rather our donors consider what might be an appropriate gift for their own child/ relative, purchase the item, and donate to Toys for Tots.

Presidents Corner

Let's remember the real reason for this season.

Only when Christmas comes knocking at the door do we realize that it is time we sent some greetings to our friends and family. And then suddenly, we get lost in the hustle and bustle of gifts, greeting cards, last minute preparations such as party decorations, game planning and menu listings. With all this, we tend to get lost in the magic and joy synonymous with Christmas.

Dr. Seuss said it best... "It came without ribbons! It came without tags! It came without packages, boxes or bags!... Then the Grinch thought of something he hadn't before! "Maybe Christmas," he thought, "doesn't come from a store. Maybe Christmas... perhaps... means a little bit more!"

Dr. Seuss, How the Grinch Stole Christmas!

In the midst of all this, do we ever wonder if we have lost the real essence of Christmas? Lets remember the real reason for this season. Merry Christmas all!

Christmas Party: December 12

Time: 7pm - 9pm

What to Bring: 2 side dishes to share
1 unwrapped gift per person for Toys for Tots (2 gifts if the budget allows), ages 2-12
Money for White ticket sales for the chance to win one of two gold nugget prizes

Billy's Southern Pride Takeout & Catering will be providing Smoked Brisket, Smoked Turkey, Pulled Pork, Baked Beans, and Seasoned Green Beans. GPOC will be providing coffee, decaf coffee, lemonade, eating utensils, salt & pepper, and strip outlets for those that bring a crock pot. Please make sure to label all dishes and serving utensils.

Borsch Brothers Mandolin/Guitar Duo will be providing musical entertainment for the evening.

Ideas for side dishes: Potatoes of any style, sweet potatoes of any style, bean casseroles, veggie casseroles of any style



Salads - green, fruit, pasta, potato
Crock pot dishes of any kind
Cheese/cracker, fruit, veggies trays
Rolls - looking for Hawaiian Sweet rolls for sandwiches
Desserts - homemade are awesome, but we are trying to keep desserts at a limit

We do need volunteers to set-up about 5:15-5:30p. We will especially need volunteers to clean up after... do not have to tear down tables & chairs.





NATIONAL MINING HALL OF FAME AND MUSEUM

The Premier Showcase of American Mining

Museum *(Leadville, CO)*

The National Mining Hall of Fame and Museum is a monument to the memory of the men and women who pioneered the discovery, development, and processing of our nation's natural resources.

Our mission is to "Tell the story about mining, its people, and its importance to the American public." Known as the "Smithsonian of the Rockies" and the "Premier Showcase of American Mining" the National Mining Hall of Fame and Museum houses 25,000 square feet of interactive and informative exhibits sharing the narrative of mining and its importance to our everyday lives.



Hours

Open Tuesday-Sunday 9 AM - 5 PM

(Last ticket sold at 4:15 PM)

Closed Mondays (from November– through April)

Closed Thanksgiving, Christmas, and New Year's Day

Location

National Mining Hall of Fame and Museum

120 West Ninth St.

Leadville, CO. 80461

Prices

General Admission: \$12

Student Admission: \$10

Children Under 6: Free

Admission discounted \$2 for seniors (65 & older), active/retired military, members of AAA/AARP

Free admission for Lake County students, members of AAM and NARM, and Boy Scouts who are working on or have earned the Mining in Society Merit Badge

***Free admission for active military
and immediate family***

(Memorial Day to Labor Day)



MATCHLESS

THE MINE, THE MYTH, THE LEGEND

Once a bonanza silver mine of the 1880s, the Matchless Mine has remained a historic landmark, telling its story of the boom/bust days that put Leadville, Colorado on the map.

New Exhibition

February 2018
through
January 2019



Phone (719) 486-1229

<https://mininghalloffame.org>



Blast from the Past

THE REGULAR DAILY STRIKE.

Colorado Daily Chieftain, January 4, 1894

Some Beautiful Stuff that Comes Out of the Gold Dollar Mine. Cripple Creek, Colo. January 3, 1894. The first free gold so far found on Beacon hill was taken from the Gold Dollar mine today, and is being shown about as a curiosity. Beacon Hill has shown some of the most magnificent specimens ever taken from the earth, but they have been of a Sylvanite character. The gold found in the quartz today was as bright and sparkling as the stuff taken from some of the mines about Breckenridge.

OURAY COAL CO.,
DONALD & WHEELER, MANAGERS.
WHOLESALE AND
RETAIL DEALERS IN



Anthracite, Baldwin
Cannon Nut and Lump
Spruce, Crested Butte
Fleasant Valley Nut
Fleasant Valley Lump

TELEPHONE 21-B. SPECIAL PRICES ON CAR LOTS.

The Manitou
Excellent
Evening dinners
from 5 to 7.
35cts.

Mesdames Malmix & Lashet, Prop's
of THE MANITOU, invite those
who appreciate home cooking, well
served meals at moderate prices and
home-like surroundings, to give
The Manitou a trial. Rates meals:
Transients, 30c. Special rates to
permanent boarders. Opposite Court House.

In Routt County

Aspen Evening Chronicle, December 1, 1892

Byron E. Shear and H. B. Gillespie, the originators of the Mollie Gibson mine, says the Rawlins Journal, have created a sensation by acquiring about 320 acres of placer territory on the Pour Mile creek in Routt county. They intend to organize a stock company at once and will capitalize it at \$ 2,000,000 one half in treasury stock for development purposes. They will proceed at once to build a ditch and put in hydraulic machinery at a cost of \$ 100,000. This is the first placer enterprise on that creek, and as the property has been thoroughly prospected and spot gold found in large paying quantities, great results are expected.

Do You Write Much?
WHY NOT USE A
REMINGTON STANDARD TYPEWRITER?

Finest and fastest writing machine made. For 15 years the standard and constantly improving. \$30.00 in use. Write for catalogue and testimonials. Fine linen paper and typewriter supplies. We make no charge for furnishing stenographers. WYCKOFF, SEAMANS & BENDIS, 1639 Champa Street, DENVER, COLO.

STA-BIL

Why bother... with fuel stabilizers.

Quick Answer: Quick easy starting, keeps fuel fresh, helps absorb moisture, while protecting gaskets and rubber components.

Longer Answer: Fuel stabilizer works by slowing the oxidation process of gasoline. It helps keep heavier compounds in solution and allows the fuel to absorb some of the moisture that forms in a tank instead of separating into layers. This moisture develops from the heat and cold cycles, if you among the normal prospecting community, our wife's won't let us keep our equipment in an environmentally controlled space (family's living space.)

Most stabilizers are a type of fuel additive; these additives can be purchased from your local small engine shops, lumber or hardware store in their lawn mower section. If you are still unsure, talking with the knowledgeable sales staff will truly enlighten your yearend clean up and winter preparations.

Gasoline can go stale in as little as 30 days. When this happens, the fuel oxidizes which can clog engine components leading to poor engine starting, inconsistent performance, or even engine failure. In addition, ethanol-blended fuels like E10 can lead to rust or corrosion within your engine if the fuel is not treated with a fuel stabilizer.

If you're one of the overly busy people that forget to drain your tank. Fuel Stabilizers eliminate the need to drain fuel before storage and protects your engine from gum, rust and corrosion. These problems can afflict engines when gasoline is left in your tank for extended periods of time, has broken down and has not been treated with any type of fuel stabilizer.

Fuel stabilizers keep fuel fresh for quick, easy starts after periods of storing your small engine, such as your gas powered dredge motors (my favorite is my lawn mower after the long cold winter.) If your anything like me we tend to be over protective of our dredges, and \$6 to \$8 for a bottle of this liquid gold is cheap for that quick and easy start-up the first cold spring morning on the Arkansas River.

Not all rubber components, engine seals or gaskets are made to withstand the harmful effects of a 10%-15% concentration of ethanol, especially older smaller engines.

Most of the fuel stabilizers are designed specifically for these 2-stroke and 4-stroke "small" gas engines, STA-BIL Fuel Stabilizer also prolongs the life of engines by removing water from gas tanks, and cleaning carburetors and fuel injectors. The solution works safely and effectively in all gas blends.



GPOC Board & Committee Chairs



GPOC BOARD

President

Marty Allen

gpocPresident@gmail.com

Vice President

Charles Engler

gpocVicePresident@gmail.com

Secretary

Jo Manning

gpocSecretary@gmail.com

Treasurer

Wayne Wittkopp

gpocTreasurer@gmail.com

One Year Trustee

Joe Manning

gpocTrustee1yr@gmail.com

Two Year Trustee

Calvin Johnson

gpocTrustee2yr@gmail.com

Three Year Trustee

Paul Burns

gpocTrustee3yr@gmail.com

COMMITTEE CHAIRS

Membership

Elise Pearce

Membershipgpoc@gmail.com

Raffle

Wayne Wittkopp

gpocRaffle@gmail.com

Claims Committee

Bud Yoder

gpocClaims@gmail.com

Championship Committee

Dermot Haley

gpocChampionship@gmail.com

Speakers

Lou Espinosa

gpocSpeakers@gmail.com

Planning Committee

Del Hess II

gpocPlanning@gmail.com

The Quill Editor

Steve Cormier

gpocQuillEditor@gmail.com

Associate Quill Editor

Steven Veatch

The Gold Prospectors of Colorado (GPOC) was founded around 1974 as a non-profit organization for recreational gold prospectors in the Colorado area. Our membership at any given time has grown to over 600 members and continues to grow across the Front Range, the nation, and even the world!

GPOC Outings & Events Planner

In response to feedback from our members. We are adding a rolling three month planning calendar to each issue of the Quill. You can now see and plan for upcoming events months in advance and make requests to the Planning Committee for outings and events, Be sure to check the GPOC web site at WWW.GPOC.CLUB for more info on events including location and start times.

DECEMBER 2018

The Prospector's Quill Calendar

Sun	Mon	Tue	Wed	Thu	Fri	Sat
2	3	4	5	6 GPOC Board Meeting ** National Miner's Day (Article pg 7)	7	8 Rocky Mountain Coal Exhibit Closes
9	10	11	12 GPOC Christmas Party	13	14	15
16	17 WMMI Holiday Model Train Exhibit Opens	18	19	20	21	22
23	24	25	26	27	28	29
30	31	Jan, 1 2019	2	3 GPOC Board Meeting	4	5

JANUARY 2019

The Prospector's Quill Calendar

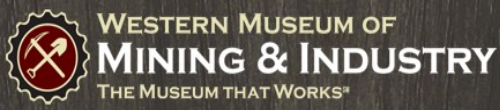
Sun	Mon	Tue	Wed	Thu	Fri	Sat
Dec 30, 2018	31	1	2	3 GPOC Board Meeting	4	5 WMMI Family Day Geology
6	7	8	9 GPOC Monthly Meeting	10	11	12
13	14	15	16	17	18	19
20	21	22	23	24	25	26 WMMI Writers' Course
27	28	29	30	31	Feb 1, 2019	

- **GPOC Board Meetings** are held the 1st Thursday of each month at **7 pm**, Gold Hill Police Station, 955 Moreno Avenue, Colorado Springs, CO, (access from W. Moreno Ave.). GPOC Members only.
- **GPOC General Membership meetings** are held the 2nd Wednesday of each month at **7 pm**, Elks Lodge, 3400 N. Nevada Ave, Colorado Springs, CO. The General Public is welcome!
- **GPOC Planning Committee Meeting.** **7 pm** at Village Inn, Garden of Gods. & 125, CO Springs. GPOC Members Only.
- **GPOC Claims Committee** Meetings are held at WMMI at **10am**, the last Saturday of the month. GPOC Members Only.
- **GPOC New Member Orientations** are held on Saturdays indicated at 10am @ WMMI. March and June are also followed by a GPOC Power Class—where you can study the GPOC Rules, Ethics, and Regulations—and earn discounts on Power Permits.
- **GPOC New Member Outings** are held the Sunday after New member Orientations. Meet @ 9am in the Cabela's parking lot, off the Ridgeway Parkway exit off I-25, south side of Denver

FEBRUARY 2019

The Prospector's Quill Calendar

Sun	Mon	Tue	Wed	Thu	Fri	Sat
Jan 27, 2019	28	29	30	31	Feb 1, 2019	2
3	4	5	6	7 GPOC Board Meeting	8	9
10	11	12	13 GPOC Monthly Meeting	14	15	16
17	18	19	20	21	22	23
24	25	26	27	28	Mar 1, 2019	2



WMMI News

www.wmmi.org

National Miner's Day

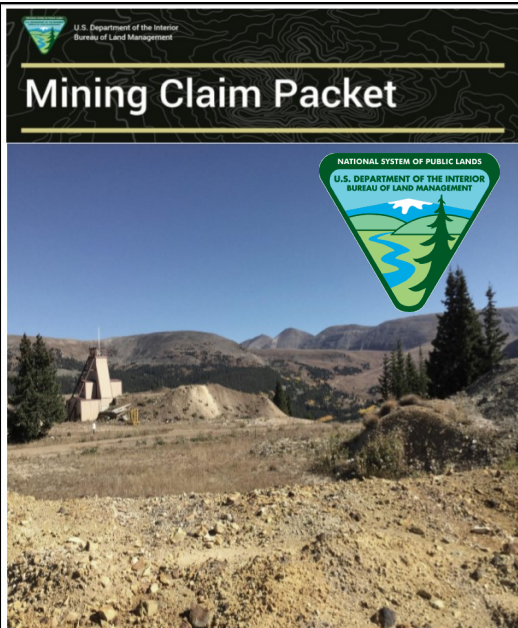
Dec. 6, 2018

Western Museum of Mining & Industry wants to acknowledge also how much mining affects our daily lives and invites you to visit the museum at a discounted rate!

RSVP to rsvp@wmmi.org
or (719) 488-0880

225 North Gate Blvd.,
Colorado Springs, CO 80921
(719) 488-0880

Visiting Hours
9:00 a.m. - 4:00 p.m.,
Monday - Saturday Year Round



Updated BLM Mining Claim Packet

Revised September 10, 2018
4.8MB, pdf formatted, 91 pages

For a copy Click on the link below;

[Mining Claim Packet](#)

The above link will bring you directly to the BLM site to start the PDF Download.

Field Test Before Nugget Hunting

Why bother with field testing?

I was one of those individuals that chose to skip this vital step. What I found out the hard way was, how much time I spent failing to find those elusive small little nuggets. Not because I hadn't mastered my metal detector, nor was the location bad. It was the tiny bit of extra knowledge of seeing and hearing a "real" nugget in the field that made the difference.

What exactly is field testing? When you're at the location in which you intend to hunt, you bury a gold nugget in the ground and see how your metal detector responds. This can be achieved by watching the VID (Visual Identification) plus, listen to the sounds, then make any necessary adjustments to your metal detector.

What happens if I lose my precious nugget? After speaking with several detectorists, we came up with a neat little solution on how not to lose that tiny little nugget. It was achieved by attaching the gold nugget to a brightly colored plastic disk and tying a foot long piece of surveyor tape to the disk.

The idea is to glue (epoxy seems to work well) the nugget to the plastic disk, drill another hole to attach the surveyors tape, and write on the sample what it is and approximate weight and size. The size of the gold nugget should be small, or at least the average size of nuggets for the area your hunting. Keep in mind that the average metal detector can see a nugget the size of a pinhead. Smaller is better, my test nugget is .002 troy oz, it's tiny, but small is good.

The test nugget "disk" is for you to be able to bury your nugget at different depths and angles. Letting your metal detector tell you how this particular gold nugget will react in the soil conditions. Don't be afraid to recheck every time you feel the conditions change. Spend some time listening to how the nugget sounds, it's okay to keep repeating the test, practice make perfect. My ultimate goal is to create real time conditions, this give me the opportunity to make minor adjustment to my settings.

If you choose to be successful, having a premade and easily retrievable nugget disk can and does increase your odds. After you start field testing you will become more and more comfortable with your metal detector, making hunting for nuggets easier. Things may go slow at first, as you become familiar with each successful dig, your gold jar will start to fill.



The old saying goes, "Gold is where you find it." Make a disk, test it in the field and give yourself a fighting chance, to "find it."

Metal Detector

Using a Metal Detector to find Gold



Interesting Note:

Today's newer Metal Detectors are being used in hard rock mining to find pay streaks.



GPOC Forum

Colorado's Premiere Gold Prospecting Club

In the up coming issues of the Quill we will be spotlighting different questions and articles. This is a post from our clubs website in the "Forum" section.

If you're a member your thoughts and ideas are welcome.

Moss or Mossless?

Post by **AM_Jim** » Wed Oct 26, 2016 1:01 pm

I posted some time back about which type of moss is better, or preferred. I'm surprised that it received little attention or answers, so let's try a new question on it...

What say you... Moss or No Moss (mossless)? Yes, No, Maybe so? Anyone try it both ways? What was your results if so? Preference?

I am asking this question, because I am wanting to get away from "Moss" altogether, and reduce a step in cleaning out my sluices. It is more than aggravating to have 5 stages of cleaning out with my Keene A-52 sluice! There are sluices, or sections of sluices, and high bankers being sold that I have seen (most manufactures) that use no moss at all, but have just a mat system. Obviously, some mats are designed to work without moss. So I ask again... **What say you**

Feel free to visit the [website](#) and give your thoughts, it is part of your membership and we would like to hear from you.

Golden Cycle Mill

Colorado City, CO.

At the heart of the Colorado gold rush was the Golden Cycle Mill. The mill used a Bromine leaching process for extracting gold.

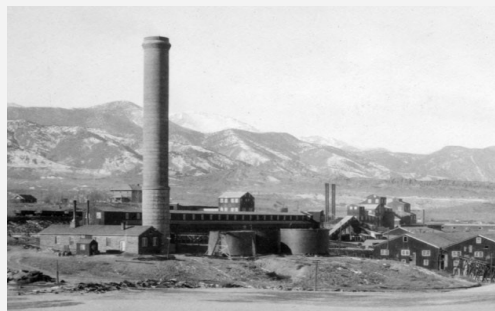
The mill was originally purchased from the bankrupted Telluride Reduction Company (Telluride Mill). In 1907 a fire caused by an explosion in the roasting room, destroyed about 10 acres of structures in about two hours. Twenty men were in the room at the time and it was regarded as marvelous that no one was hurt.

It stood near 21st Street and US Hwy 24 in Colorado City (now called Old Colorado City), for almost four decades. The early years the mill could process 900 tons per day of Cripple Creeks ore, and eventually raising the rate to 1,500 tons everyday. The tailings pile, chimney can still be seen today on the west side of the highway.

The ore was hauled from Cripple Creek by rail. The Midland Railroad hauled the ore nearly 60 miles down Ute Pass to Colorado City. Parts of the old RR bed and tunnels can still be seen today and US Hwy 24 travels on much of the old RR bed going up the pass.

The railroad created a influx of mills into the area, five in total; Telluride Mill, Colorado-Philadelphia Mill, Standard Mill, Portland Mill and the Golden Cycle Mill. The Golden Cycle Mill won out because of it's ability to process large quantities of lower grade ore, and by keeping up with the latest way to process telluride ore.

In 1949 the mill was closed, in this 45 years of operation it processed 14,000,000 tons of gold ore. This was 8,000,000 ounces of gold, but the process did not extract all the gold. In 1949 they tested the tailing and assayed at .04 ounces gold, worth \$0.80 per ton in the tailings pile, this is 57,800 ounces of gold, at todays prices it's over \$70.9 million dollars.



NATIONAL MINER'S DAY

National Miner's Day is observed annually on December 6.

This day was created as a day of reflection, when we can show appreciation for the sacrifices, honor the accomplishments and remember the tragedies that these hard-working individuals experience. Mining is one of the most dangerous jobs in America, and the miners put their lives at risk each and every day as they contend with health and safety issues as well as their uncertainty of the future.

Everyday products that we use are made up of raw materials that have been excavated from mines and are a result of the work of the miners. These men and women play a much more important role in our lives than most people realize.

National Miner's Day marks the anniversary of the worst mining accident in history on December 6, 1907, in Monogah, West Virginia. The disaster resulted in the deaths of 362 miners. In 2009, Congress proclaimed each December 6 as National Miner's Day.





The Prospector's Quill

VOLUME XLIII, ISSUE XII



Gold Prospectors of Colorado

PO Box 1593

Colorado Springs, Colorado 80901

Phone: 719-651-7930

E-mail: MembershipGPOC@gmail.com

Visit us on the web! <http://www.gpoc.club>

Prospecting Colorado since 1974.

THE ROCK DOC

AT PROSPECTORS VILLAGE

between Buena Vista and Salida

(719) 539-2019

Metal Detecting for Beginners

Come by the shop for all your metal detecting needs!

Visit our Facebook Page for more details on classes

or email me - cindy@therockdoc.net



The Rock Doc

17897 US Hwy. 285

Nathrop, Colorado 81236

Join our email list at "therockdoc.net"

Gold Prospectors of Colorado
PO Box 1593
Colorado Springs, Colorado 80901

